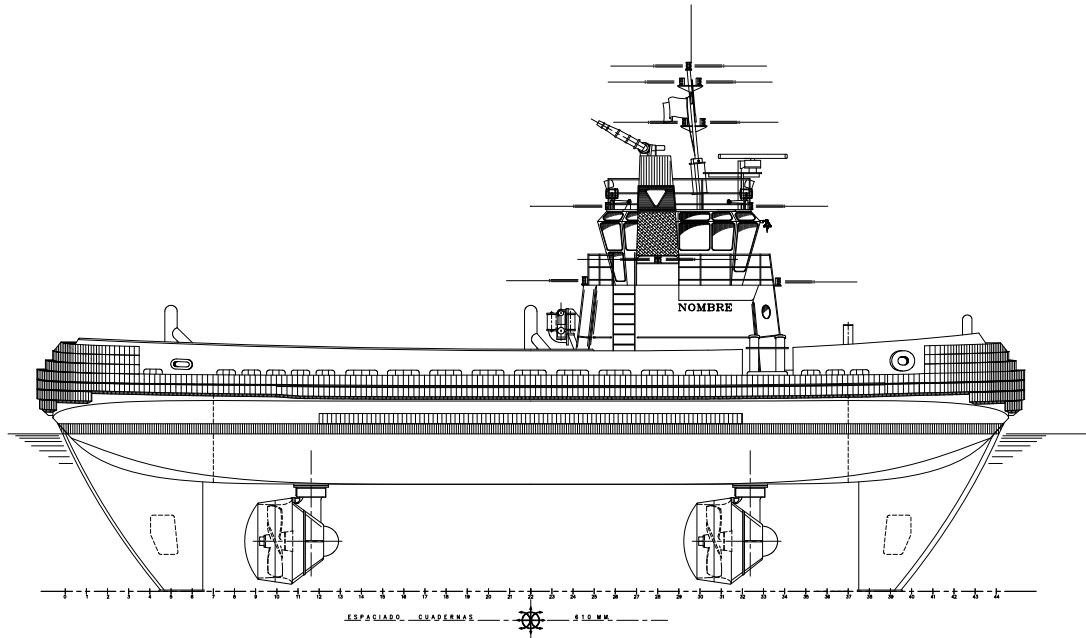


ASYMETRIC TRACTOR TUG

C-651 – C-652 & C-653

Applications: Port manoeuvres and towage – High sea towage
Classification: Lloyd Register of Shipping
Notation: +100 A1 TUG FI-FI 1 / WATER SPRAY + LMC, UMS, CCS, EP, ESCORT TUG



MAIN CHARACTERISTICS:

Length o.a.	27,55 metres
Length p.p.	26,84 metres
Beam, moulded	15,25 metres
Depth at sides	3,30 metres
Moulded draft	1,45 metres
Max. draft	4,65 metres
Crew	6
Bollard pull	78 tons.
Speed	12 knots

PROPULSION

Main engines	MTU
Type	16V4000M61
Output	2 x 2.720 BHP (2 x 2.000 kW)
R.P.M.	1.800
Propellers	SCHOTTEL
Type	2 x SRP 1515
MCD	Twin Disc, 3000 – 7 HD

DECK MACHINERY

Towing winch	Escort Towing Winch
Towing hook	80 tons. SWL
Deck crane	10 Tons./m.

FI-FI SYSTEM (WATER/FOAM)

Class	FiFi 1
Fi-Fi pump	2 x 1.356 m ³ /h., 12,5 bars
Fire monitor	1 x 1.200 m ³ /h.
	1 x 1.200 + 300 m ³ /h.
Fire drenching arrangement	

TANK CAPACITIES:

Fuel oil	63 m ³
Fresh water	4,7 m ³
Lubrication oil	7 m ³
Foam	4,8 m ³
Ballast	19 m ³

AUXILIARY GENERATING SETS

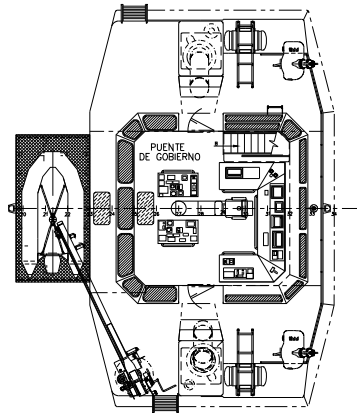
Diesel engines	GUASCOR
Type.....	H66T-SG
Output	2 x 98 kW.
	400 V., 50 Hz.
R.P.M.	1.500

MISCELLANEOUS

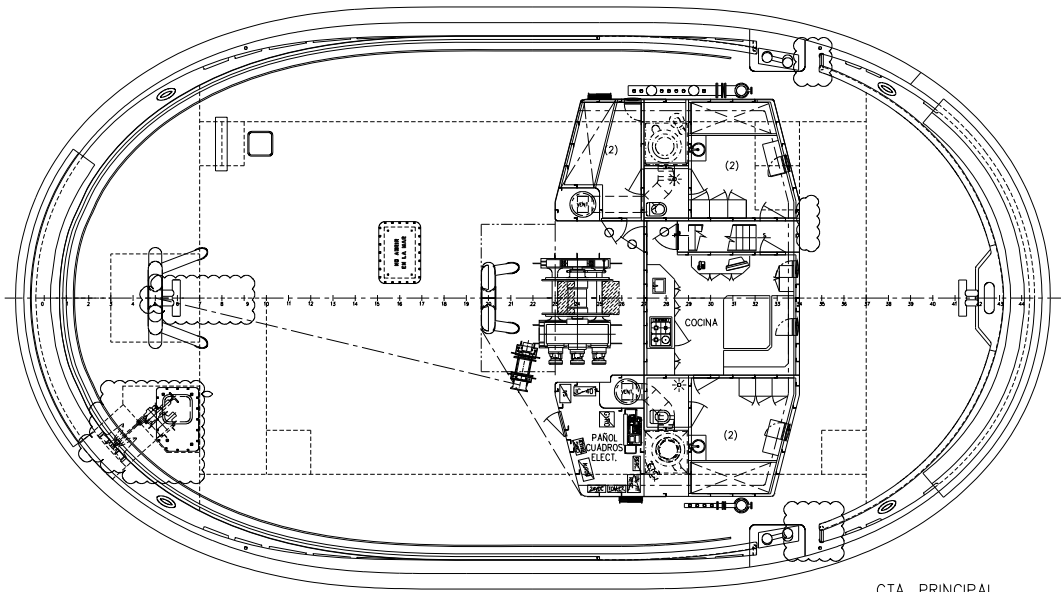
Air conditioning plant
 Sewage plant
 Bilge water separator
 DP System

ASYMETRIC TRACTOR TUG

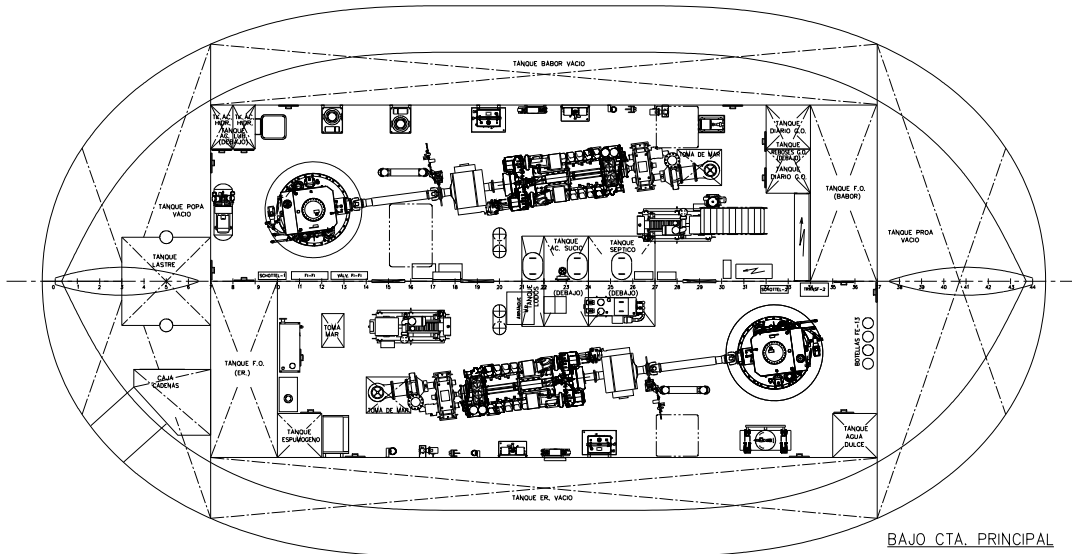
C-651 – C-652 & C-653



CTA. PUENTE



CTA. PRINCIPAL



BAJO CTA. PRINCIPAL